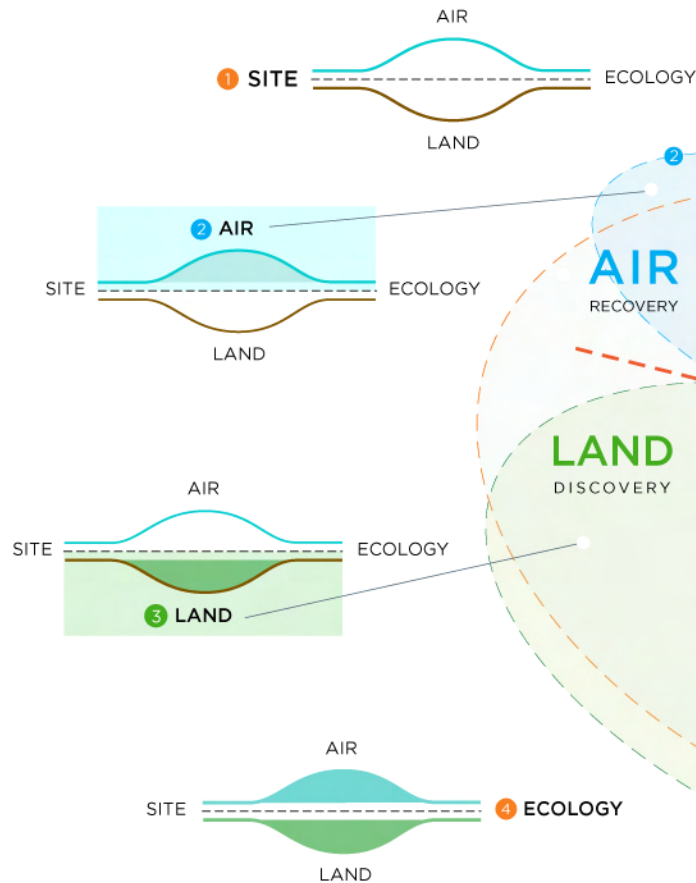
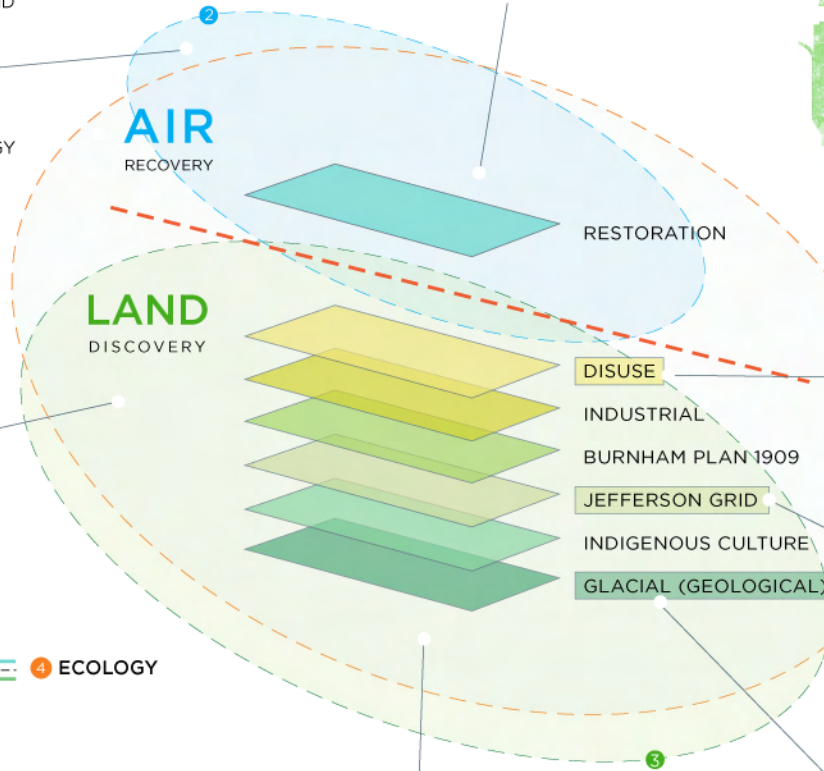


# CONTEXT

the interrelated conditions in which something exists or occurs



**RECOVERY (AIR)** - Adds a new layer to the site. The layer of restoration floats above the landscape. It is seasonal, temporal, and ephemeral, creating a place that provides objective views of the changing landscape. It keeps watch over the seedbeds until they are no longer needed, providing a view as the prairie reclaims the site.



The landscape at Midewin comprises a collage of multiple histories layered upon one another. Each of these layers has physically shaped Midewin uniquely over time. The time line of the layers spans from present day to prehistory. Before Midewin, the Joliet Arsenal produced a military order and industrial landscape.

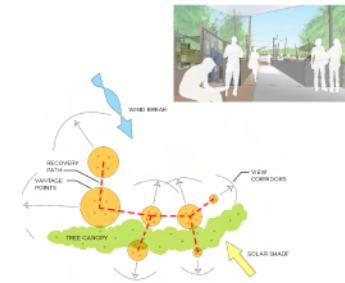
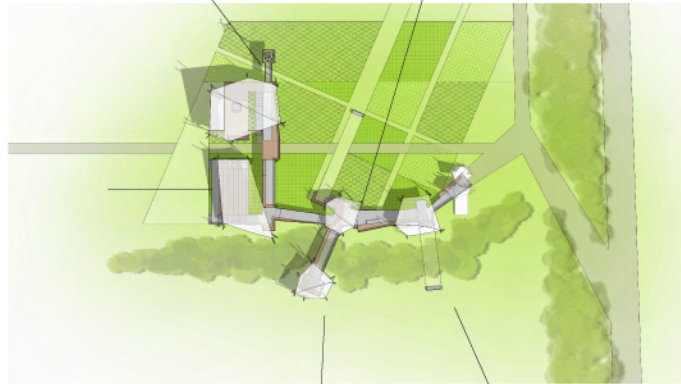
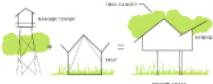
Before Burnham made his plan, Jefferson imposed his democratic, one-mile grid dividing the land equally in an attempt to convert uncharted wilderness into cultivated lands. Before the indigenous people, the glacial period carved its way through the land. Over time, these historical layers have been collapsed into a collage of landscapes that make up Midewin. Our design proposal organizes these layers into the foundation for our two schemes, iron bridge (discovery) and seed bed (recovery).

**DISCOVERY (LAND)** - Embarks on a revelatory process by excavating through the historical layers and producing a sequence of experiences that illustrate the events that produced Midewin's landscape. It is permanent, solid, and made of the earth and intends to evolve into the lasting landscape. It provides a new landmark and with it, opportunities for discovering the prairie, the pastures, the arsenal, the geology, and the site's transitions through time.

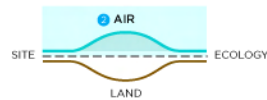
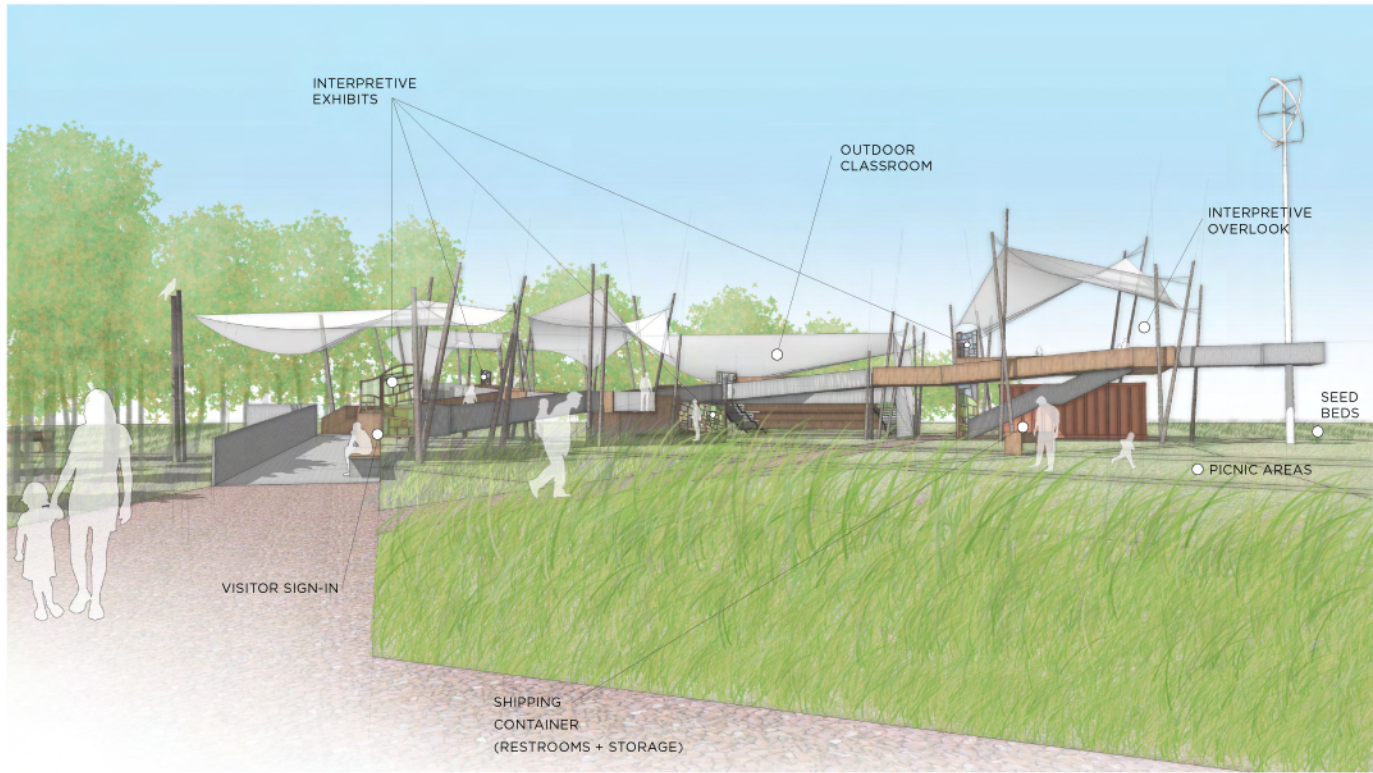
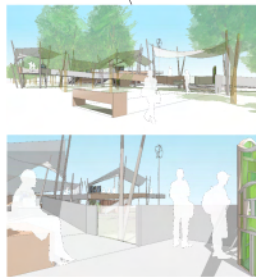
# RECOVERY

the bringing back to a former position or condition (restoration)  
a representation or reconstruction of the original form (restoration)

/ sectional concept /



/ organization /



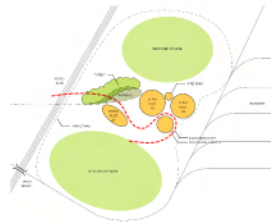
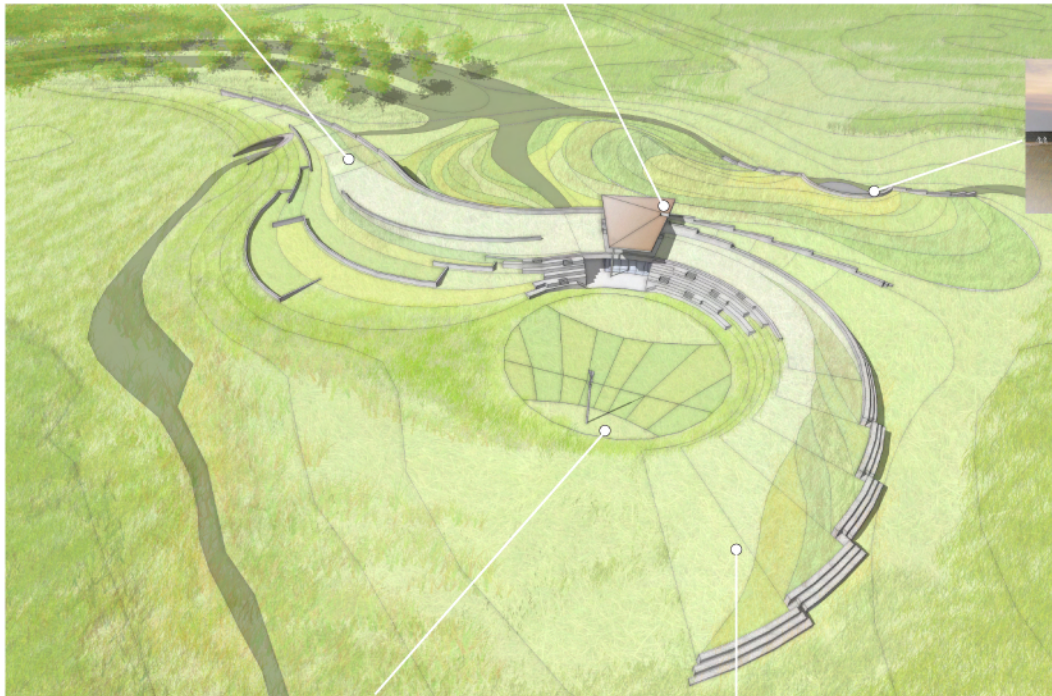
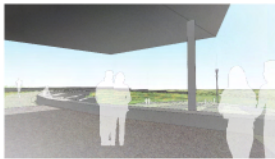
The restoration site is temporal in nature. Like much of Midewin, it changes with the seasons. Restoration will one day be complete, the seedbeds will return to prairie, and the trees that define the windbreak will be removed, while the walk and canopies remain. Metal grates allow light and air to penetrate and wooded benches provide places for rest, learning, and introspection. The canopies will create shade much as the trees do now. As the seasons change, the leaves fall, and the seedbeds go dormant, the canopies are removed and stored for spring.

The path is narrated by a series of interpretive panels, describing the soils, flora, and fauna. The upward progression culminates in an outdoor classroom and a raised overlook near the wind turbine. Services are tucked below in a reclaimed shipping container. The modularity of the shipping container allows it to be removed, cleaned, and stored off-site along with the canopies during the winter months.



# DISCOVERY

to make known or visible  
to obtain sight or knowledge of for the first time



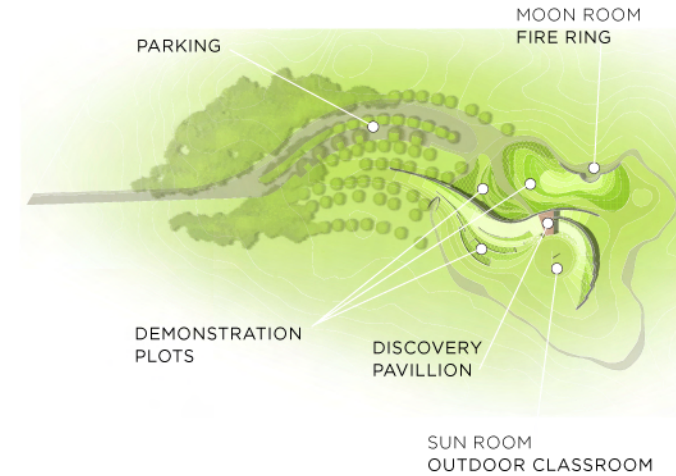
/ outdoor rooms / trails



/ sculpted landform /



/ site sequence /



PARKING

MOON ROOM  
FIRE RING

DEMONSTRATION  
PLOTS

DISCOVERY  
PAVILLION

SUN ROOM  
OUTDOOR CLASSROOM



bur oak



asclepias  
verticillata



deschampsia  
caespitosa



wild turkey



bobolink



red fox



dutchman's  
breeches



schizachyrium  
scoparium



liatris aspera



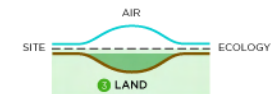
coyote



blanding's turtle

Like an archeological ruin, the discovery site has a quiet permanence. Exploring the various and sometimes conflicting layers of history on the site, the path is both of the earth and above the earth. The land explores time as an historical arc, a seasonal phenomenon, and a daily ritual. It tracks the sun, the seasons, and the history of the Midewin site. At the center of the experience is the sun room, an outdoor amphitheater oriented south, where the shadow cast by a small wind turbine tracks the sun's movement throughout the day.

Just behind the amphitheater is the ranger station and toilets, above is the canopy: both a shelter and landmark. To the north, the moon room and fire ring are carved into the back of the berm. The fire ring is designed to connect with the vastness of the night sky while giving the comfort of having your back protected by the berm.





# ECOLOGY

the totality or pattern of relations between organisms + environments

## AIR RECOVERY



SCHOONERS



TREE TRUNK + MAST



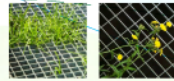
WOOD DECK



BENCH



PRAIRIE



BAR GRATE

## LEARNING



## LAND DISCOVERY

roof canopy provides shade + catches breezes for summer cooling

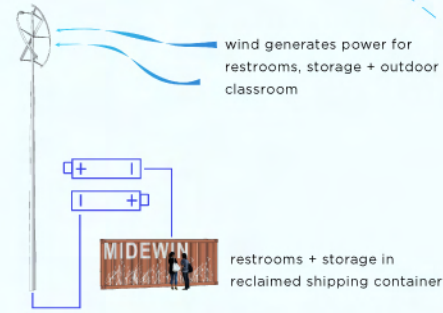
roof overhang shades interior from hot summer sun

winter sun warms the interior space

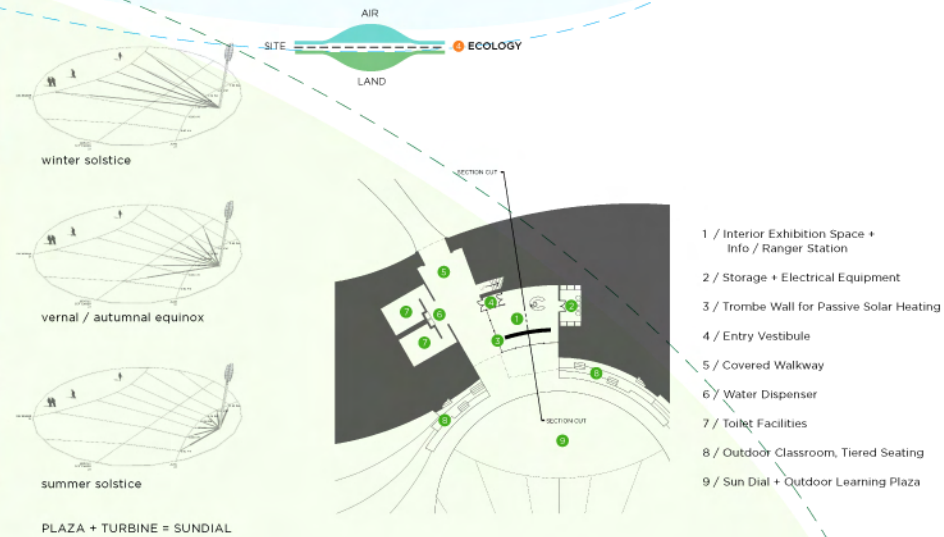
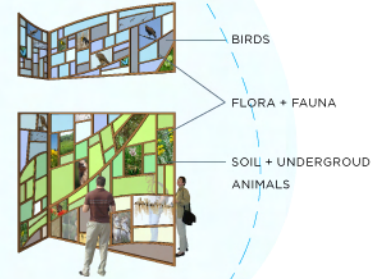
burying the building takes advantage of the Earth's constant temperature, 55°F, cooling the building in summer + warming it in winter

a slit above the trombe walls washes the exhibit space in even, diffuse light

trombe wall collects heat from winter sun, stores + dissipates it into the interior space



The two designs – although physically different – are united in purpose. The Discovery Berm is an extension of the many natural and man made landforms found at Midewin. It promotes and builds on existing water shed patterns while mounding up to gain perspective over the landscape. Its use of earthen materials produces an affordable and low impact sustainable design. The Recovery Outpost floats above the landscape. Its gentle footprint allows light and air to pass beneath. The seed beds and the outpost are united in their reliance on wind for creation, in both the spreading of seeds and the wind turbine's production of energy.



BURNHAM PLAN CENTENNIAL GREEN LEGACY PROJECT

MIDEWIN NATIONAL TALLGRASS PRAIRIE

PRAIRIE LEARNING CENTER, RIVER ROAD FACILITY + IRON BRIDGE FACILITY

HOLABIRD & ROOT

TAYLOR STUDIOS INC.

